



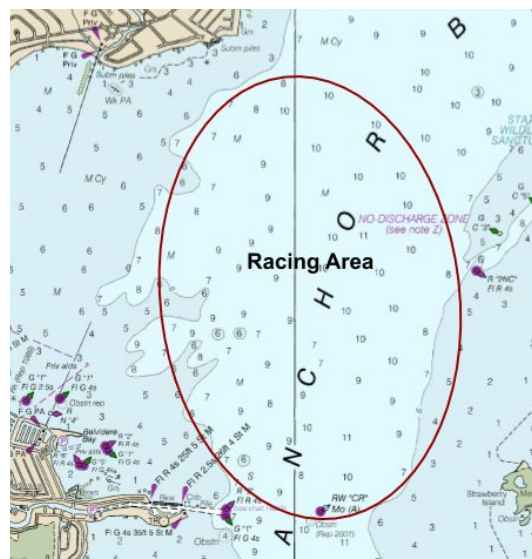
2020 Anchor Bay Fall Series

North Star Sail Club

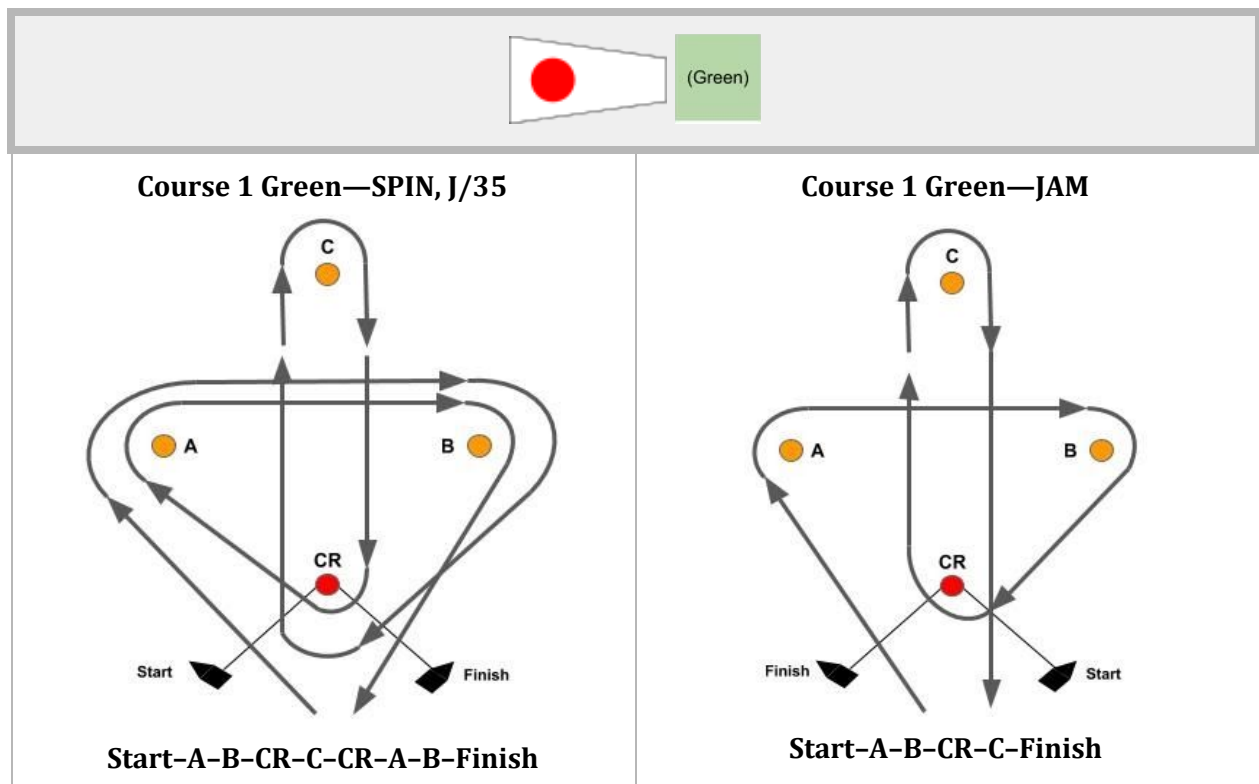
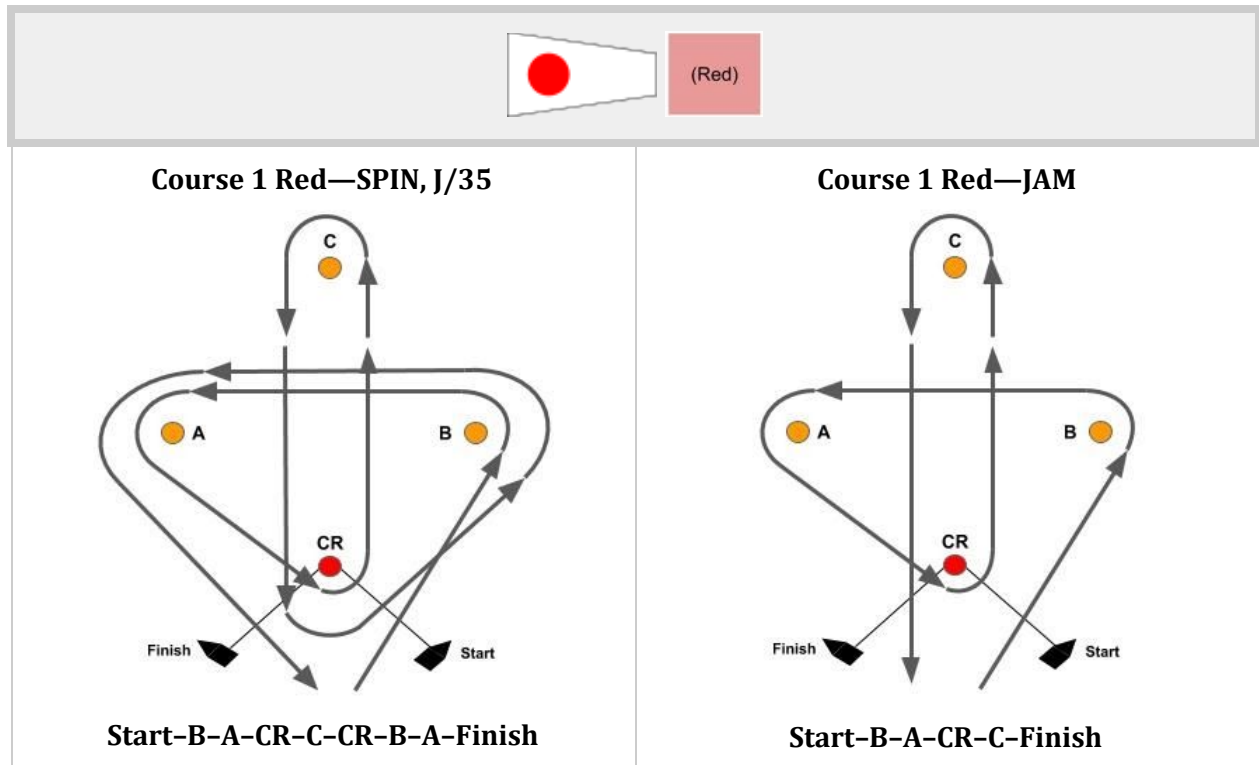
Sailing Instructions



1. **Rules.** The regatta will be governed by the rules as defined in the *Racing Rules of Sailing* (RRS) with US Sailing Prescriptions and these sailing instructions. Boats racing in an approved one-design class shall be subject to their class rules.
2. **Notices to Competitors.** Notices to competitors will be posted on the official notice board on YachtScoring.com.
3. **Changes to Sailing Instructions.**
 - a. Any changes in the sailing instructions will be posted on NSSC's official notice board before 0930 on the day that it takes effect.
 - b. Per RRS 90.2(c) when RC flies signal flag L, (come within hail), verbal changes may be given altering any part of these instructions.
4. **Signals Made Ashore.**
 - a. Signals made ashore will be displayed from the flagpole at NSSC.
 - b. When signal flag AP is displayed ashore, "1 minute" is replaced with "not less than 30 minutes" in the race signal AP.
5. **Schedule of Races.**
 - a. **Series.** Races are scheduled for September 27, October, 4, 11, and 17, 2020.
 - b. **Howard Boston Memorial Race.** The race on September 27 is also the Howard Boston Memorial Race.
 - c. The **warning signal** for the first start is scheduled for 1100 on each racing day.
 - d. The intention is to run as many races as possible over the four days of the series. **Signal flag A, with no sound, while boats are finishing means 'No more racing today.'**
 - e. The race committee will attempt to finish the majority of the boats in the last race each day by 1600.
6. **Class Flags.** Class splits, class flags, and order of start will be posted on the official notice board by 0830 on September 27, 2020. Class splits may be revised after the Howard Boston Race based on the number of boats competing in the series.
7. **Racing Area.** The racing area will be Anchor Bay, Lake St. Clair. The chart shows the approximate location of the racing area.
 - a. Courses 1 and 2 will use government buoy CR as the start mark.
 - b. Course 3 and 4 will use A, B, C, D, CR, or a mark set by the RC as the start mark. A race committee boat will display signal flag L to indicate that boats should follow the boat to the start mark.

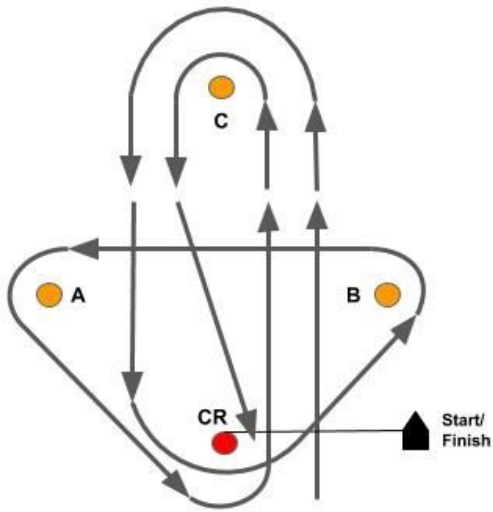


8. **Courses.** Courses will be signaled with international code flags from the race committee boat prior to the warning.



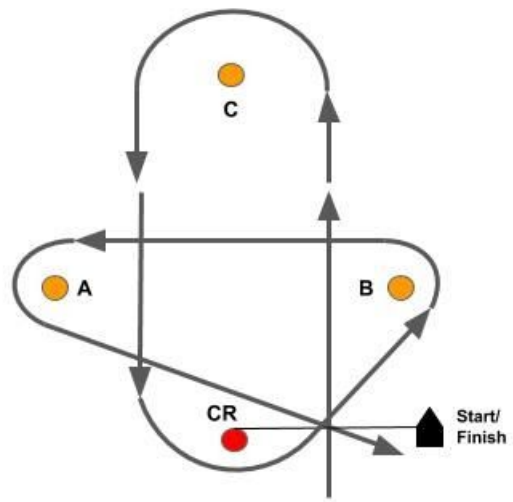


Course 2—SPIN, J/35

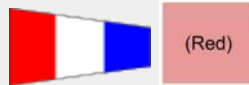


Start-C-CR-B-A-CR-C-Finish

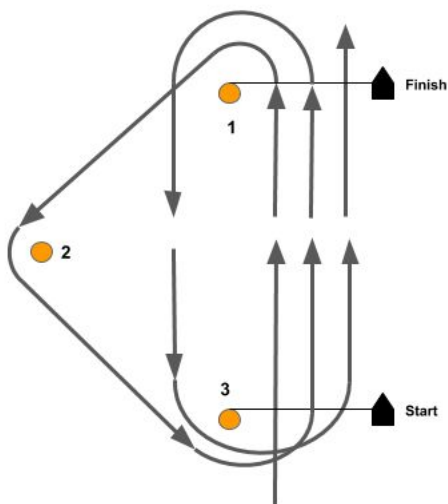
Course 2—JAM



Start-C-CR-B-A-Finish

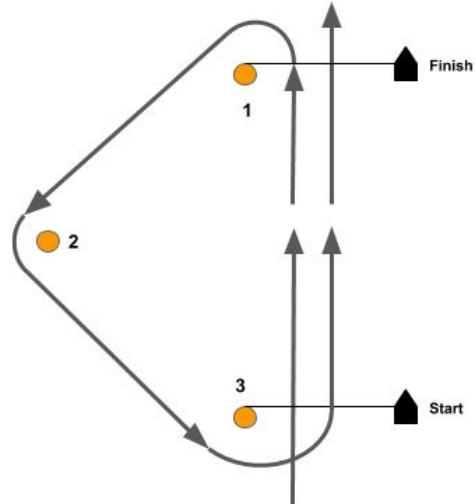


Course 3 Red—SPIN, J/35




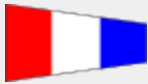
Start-1-2-3-1-3-Finish (See Table Below)

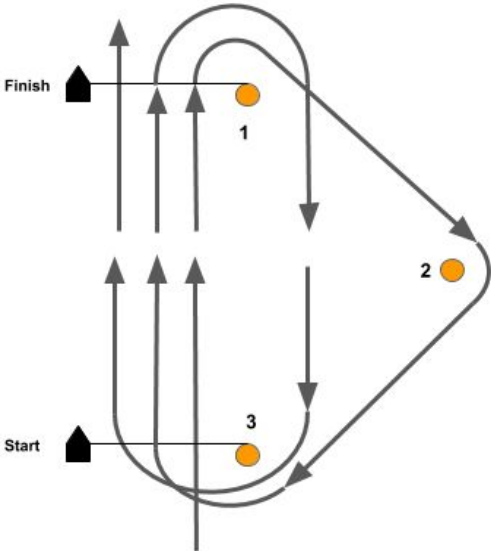
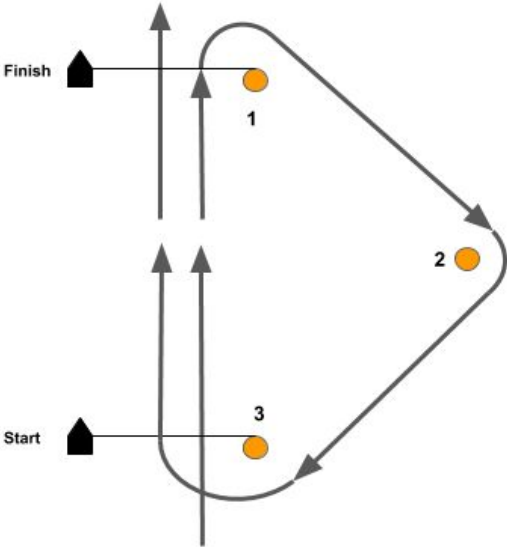
Course 3 Red—JAM




Start-1-2-3-Finish (See Table Below)

Start	Class	 (Red) Course
CR	SPIN, J/35	Start-B-A-CR-B-CR-Finish
CR	JAM, C22	Start-B-A-CR-Finish
A	SPIN, J/35	Start-CR-B-A-CR-A-Finish
A	JAM, C22	Start-CR-B-A-Finish
B	SPIN, J/35	Start-A-CR-B-A-B-Finish
B	JAM, C22	Start-A-CR-B-Finish

 (Green)

<p>Course 3 Green—SPIN, J/35</p>  <p>Start-1-2-3-1-3-Finish (See Table Below)</p>	<p>Course 3 Green—JAM</p>  <p>Start-1-2-3-Finish (See Table Below)</p>
---	---

Start	Class	 (Green) Course
CR	SPIN, J/35	Start-A-B-CR-A-CR-Finish
CR	JAM, C22	Start-A-B-CR-Finish
A	SPIN, J/35	Start-B-CR-A-B-A-Finish
A	JAM, C22	Start-B-CR-A-Finish
B	SPIN, J/35	Start-CR-A-B-CR-B-Finish
B	JAM, C22	Start-CR-A-B-Finish



with

A

B

C

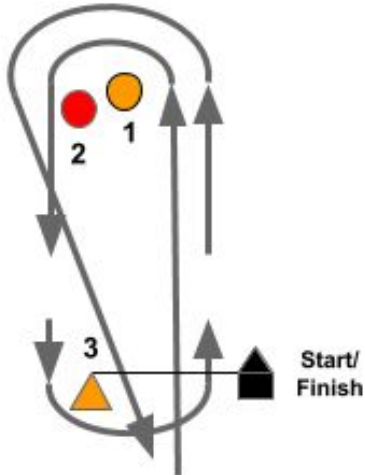
D

CR

, or

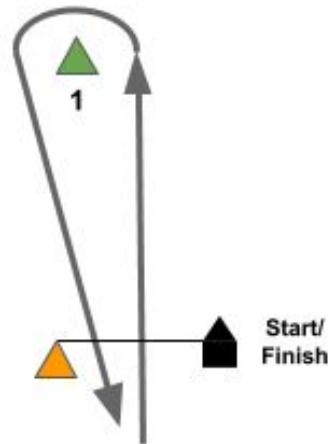
(Red)

Course 4—SPIN, J/35



Note: Mark 2 is optional
Start-1-2-3-1-2-Finish

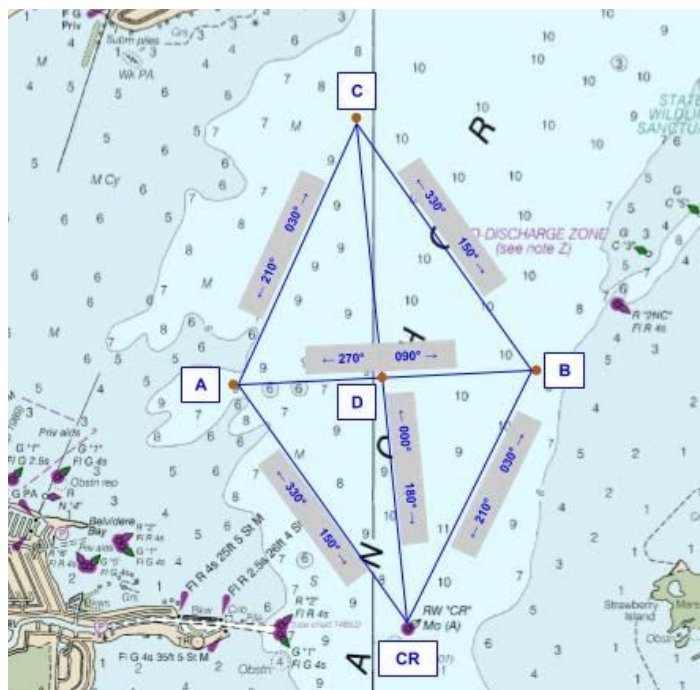
Course 4—JAM, C22



Start-1-Finish

- Starting area will be within the area bounded by marks CR, A, C, and B. Start between an orange flag on the committee boat and A, B, C, D, CR, or orange tetrahedron inflatable.
- SPIN, J/35.**
 - Mark 1 will be indicated by the shape displayed with the course signal. Shapes A, B, C, D, and CR indicate the corresponding mark described in SI 9. A red shape indicates mark 1 will be an orange inflatable set by the RC.
 - Mark 2 will be a red ball and is optional.
- JAM, C22.**
 - Mark 1 will be a green tetrahedron.

9. **Marks.** The chart shows the approximate location of the marks.
- Start/finish mark will be an orange tetrahedron.
 - New marks, as provided in SI 16, will be yellow.



Not for Navigation. All compass headings are magnetic.

Mark	Description	Approximate Position
CR	Government buoy CR	42° 35.64' N, 82° 44.72' W
A	ABYRA race mark A, orange cylinder	42° 37.01' N, 82° 46.19' W
B	ABYRA race mark B, orange cylinder	42° 37.27' N, 82° 43.84' W
C	ABYRA race mark C, orange cylinder	42° 38.64' N, 82° 45.31' W
D	ABYRA race mark D, orange cylinder	42° 37.14' N, 82° 45.02' W

10. The Start.

- a. RRS 26 is unchanged.
- b. The starting line will be between a staff displaying an orange flag on the RC signal boat at the starboard end and the course side of the start mark at the port end.
- c. The RC may set a protection buoy with a line attached to the RC signal boat. Boats shall not touch the protection buoy or pass between the protection buoy and the signal boat. Doing so shall be considered touching a mark. RRS 31 is unchanged. RRS 44.1 is unchanged.
- d. **Restricted Area.** All yachts must keep clear of the starting line area and of the first leg of the course until after the preparatory signal for their class.

11. Postponing or Abandoning Before the Start.

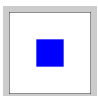

- a. RRS Race Signals is unchanged.
- b. RRS 27.3 is unchanged.

12. Personal Flotation Devices. RRS Rule 40 is changed as follows. Due to fall sailing conditions, NSSC strongly suggests the wearing of personal flotation devices (PFDs). The race committee may conspicuously display within its rigging a PFD. This does not mandate the use of PFDs, but instead suggests that the expected conditions warrant the use of PFDs by each race participant.

13. Individual Recall. RRS 29.1 is unchanged. Recalled sail numbers may be broadcast on VHF channel 72, but broadcast is not required.

14. General Recall. RRS 29.2 is changed as follows. If the race committee signals a general recall (code signal First Substitute with two sounds), the recalled class will be given its restart warning signal after all other classes have started. An announcement on VHF 72 may be given, but is not required.

15. Shortening or Abandonment After the Start. RRS 32 is changed as follows. The course may be shortened at any turning mark. The finishing line will be between the staff on the RC boat bearing the shorten course signal for that fleet and the nearby mark from the direction of the previous mark.

Shorten Course Signal SPIN, J/35	Shorten Course Signal JAM, C22
	

16. **Change of Course:** A change of course is allowed for Course 4 and is indicated by signal flag C, displayed on the RC boat near a mark along with several sound signals. The RC boat will display the magnetic course to the new mark, which will be yellow.
17. **The Finish.** The finishing line will be between an orange flag on the race committee boat and the course side of the nearby finishing mark.
18. **Time Limits.**
 - a. **Course 1.** Four hours for each class.
 - b. **All other courses.** Three hours for each class.
 - c. One yacht finishing within the time limit constitutes a race for its class, extending the time limit for that class for 30 minutes from that yacht's finish.
 - d. Any yacht that fails to finish within the extended time period will be scored TLE (Time Limit Expired), with a score of the number of boats that finished plus one.
19. **Protests and Requests for Redress.** The protest time limit shall be one hour after the race committee dock time, which will be posted on the official notice board. Protest notices will be posted within 30 minutes after the protest time limit. All protests will be heard by the DRYA protest committee. Protests shall be delivered to a race committee representative within the protest time limit and submitted online at www.drya.org.
20. **Scoring.** RRS A2 is changed as follows. One race completed constitutes a series. If four or more races are completed, a boat's worst score will be excluded. Races will be scored using Time on Time over PHRF.
21. **Safety Regulations.**
 - a. **Radio Monitoring.** All yachts may monitor VHF 72 while racing.
 - b. **Abandoning the Race.** Yachts dropping out of the race shall report as soon as possible to the race committee on VHF channel 72 or to North Star Sail Club by phone 586-463-2192.
22. **Sails and Equipment.**
 - a. **Sail Numbers.** Time will not be taken if a boat's mainsail, overlapping jib, and spinnaker do not bear the proper number or bear the same number as another yacht in its class, unless the Race Committee is notified prior to the start of the race.
 - b. **Equipment.** Every entrant is required to carry all U.S. Coast Guard required equipment.
 - c. **SPIN classes.** All sails allowed.
 - d. **JAM classes.** No spinnakers, nylon headsails, oversize whisker poles, staysails, or double head rigs may be used except as provided by class rules.
 - e. **One Design Classes.** Class rules apply.
23. **Awards.** Daily class awards will be presented following each race day at North Star Sail Club at 32041 South River Road, Mt. Clemens, MI 48045, 586-463-2192. Series and overall awards will be presented following races on the final race day. Additional trophies include:
 - a. **Howard Boston** for Overall SPIN winner of race 1.
 - b. **Dennis Meagher Memorial** to overall SPIN winner of race 2.
24. **Disclaimer of Liability.** Competitors participate in the regatta entirely at their own risk. See RRS 4, Decision to Race. The organizing authority will not accept any liability for material damage or personal injury or death sustained in conjunction with or prior to, during, or after the regatta.
25. **Insurance.** Each participating boat shall be insured with valid third-party liability insurance.

Revised 2020-09-23